

# Xrozz Absorption Reinforced 800x600

SOUND ABSORPTION AREA ACCORDING TO ISO 354 AND SS 25269

Measurement of sound absorption area in a reverberation room



Report number:  
**18-701-M14**  
Date  
**2018-09-05**

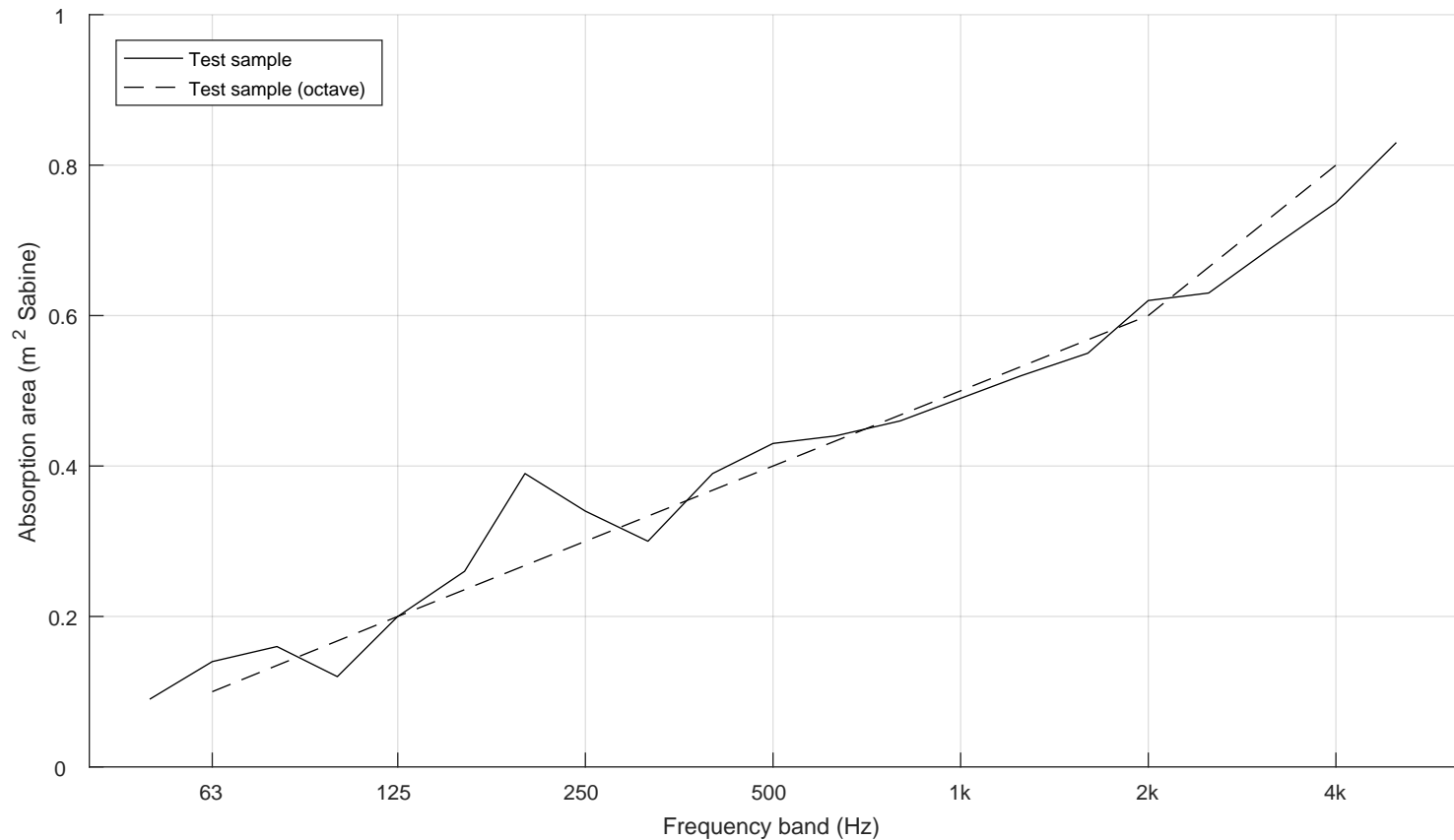
Frequency f [Hz]	Sound absorption area [m <sup>2</sup> Sabine]	
50	0.09	
63	0.14	0.1
80	0.16	
100	0.12	
125	0.20	0.2
160	0.26	
200	0.39	
250	0.34	0.3
315	0.30	
400	0.39	
500	0.43	0.4
630	0.44	
800	0.46	
1000	0.49	0.5
1250	0.52	
1600	0.55	
2000	0.62	0.6
2500	0.63	
3150	0.69	
4000	0.75	0.8
5000	0.83	

Client: Boom Interior  
 Manufacturer: Boom Interior  
 Product identification: Xrozz Absorption Reinforced

Description of test specimen: Table screen 800 x 600 x 40 mm placed directly on floor.  
 The graph scaling deviates from ISO 354 to increase readability.

Reverberation room volume: 200 m<sup>3</sup>  
 Temperature: 19.6 °C (empty: 19.7 °C)  
 Air humidity: 61 % (empty: 60 %)  
 Air pressure: 98.8 kPa (empty: 98.8 kPa)  
 Number of specimens: 6

Measurement date: 2018-08-23  
 Measured by: Johan Jernstedt



$N_{10} = 25$