

Xrozz Absorption 800x600

SOUND ABSORPTION AREA ACCORDING TO ISO 354 AND SS 25269

Measurement of sound absorption area in a reverberation room



Report number:
18-701-M1
Date
2018-09-05

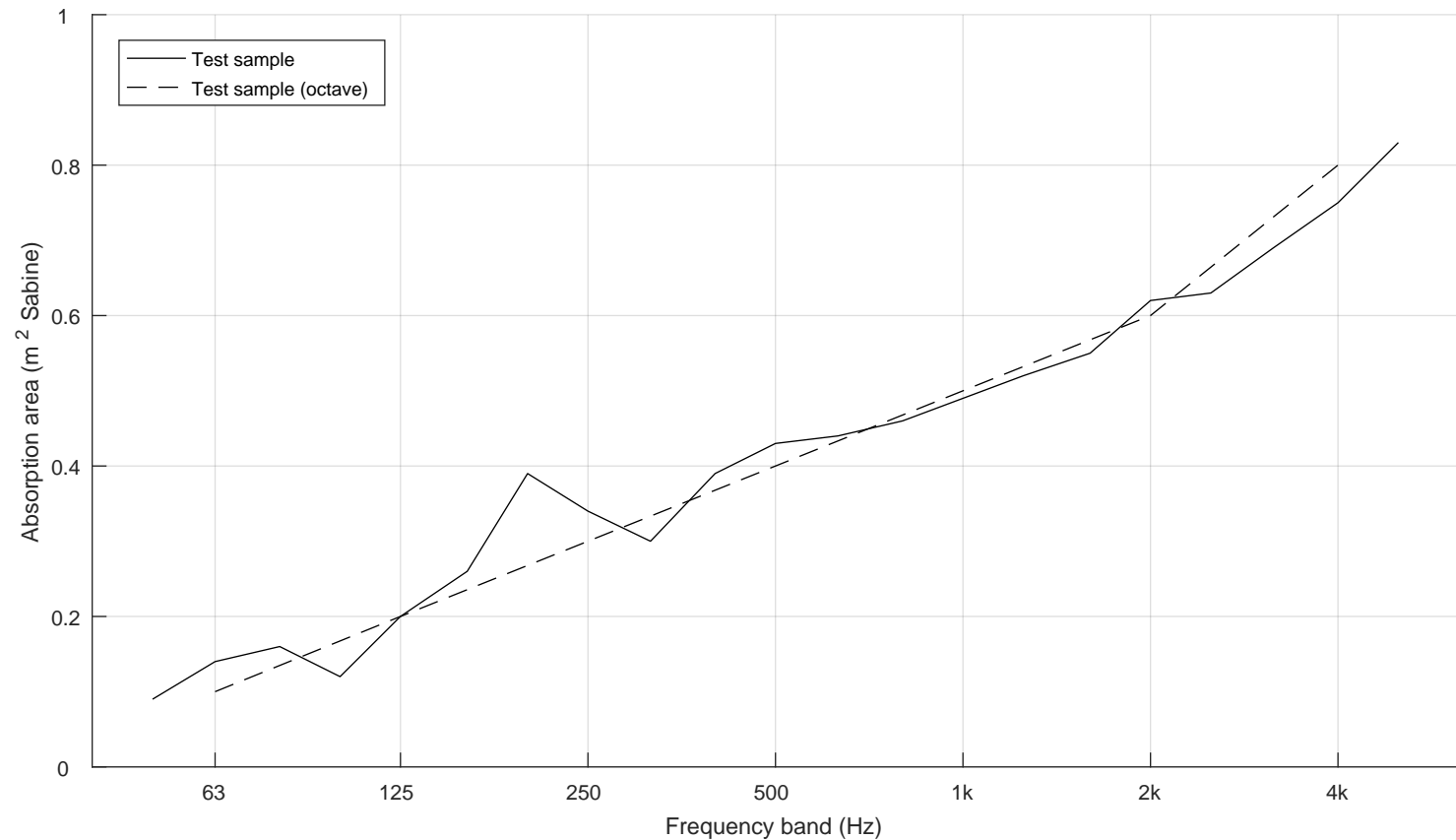
| Frequency f [Hz] | Sound absorption area [m ² Sabine] | |
|------------------------|---|-----|
| 50 | 0.09 | |
| 63 | 0.14 | 0.1 |
| 80 | 0.16 | |
| 100 | 0.12 | |
| 125 | 0.20 | 0.2 |
| 160 | 0.26 | |
| 200 | 0.39 | |
| 250 | 0.34 | 0.3 |
| 315 | 0.30 | |
| 400 | 0.39 | |
| 500 | 0.43 | 0.4 |
| 630 | 0.44 | |
| 800 | 0.46 | |
| 1000 | 0.49 | 0.5 |
| 1250 | 0.52 | |
| 1600 | 0.55 | |
| 2000 | 0.62 | 0.6 |
| 2500 | 0.63 | |
| 3150 | 0.69 | |
| 4000 | 0.75 | 0.8 |
| 5000 | 0.83 | |

Client: Boom Interior
 Manufacturer: Boom Interior
 Product identification: Xrozz Absorption

Description of test specimen: Table screen 800 x 600 x 40 mm placed directly on floor.
 The graph scaling deviates from ISO 354 to increase readability.

Reverberation room volume: 200 m³
 Temperature: 19.6 °C (empty: 19.7 °C)
 Air humidity: 61 % (empty: 60 %)
 Air pressure: 98.8 kPa (empty: 98.8 kPa)
 Number of specimens: 6

Measurement date: 2018-08-23
 Measured by: Johan Jernstedt



$N_{10} = 25$